

Elixir - HMIS Ver. 6.5

Efficient and Reliable Hospital Management Software

*Transforming Business through
integrated Information Systems*



Impact Integrated Infosystems (P) Limited

www.impactin.com

ISO 9001-2015 Certified



Why we are distinct

- Consistent in after sales service and support.
- State of art technology being used.
- Customizations requested by the customers are done on time, every time. (our customers will vouch for this)
- Customer care handled by competent engineers.
- Hand holding to ensure that the implemented software is utilized to the maximum extent possible.
- Post implementation reviews with the management to find the gaps and un-utilized resources.

Impact's view on quality is that **"Anything that our client is not satisfied with is a defect"**. At Impact we strive for total quality and nothing less.



Impact Integrated Infosystems (P) Limited, based in Cochin was established in January 1995. The organisation is promoted to service the IT industry by professionals with rich experience in the field of Software development for over two decades.

From the nascent stages till date, service and quality have been the keywords in the Organisation. We have been the first company in State of Kerala, India to implement Oracle based application on Linux platform.

Successful completion of projects brought in the necessary improvements on the organisational structure, and the firm kept seeing an ascent in the graph; this has always been an inspiration to the core team and the employees of the organisation for upholding the motto of Service to the customer.

The employee centric philosophy of the management team ensures communion between corporate goals and individual aspirations. The working environment stimulates innovation, teamwork, and consistency to fetch the best from the team.

Our core team normally consists of software professionals and application experts in each and every field we base our foot into.

Impact has a strong foot hold in the market because of the service support and the prompt attention provided to the customer. With a working growth potential, Impact aims at reaching highest standards in the Information Technology solutions and extends the customer the best support. Our customers will vouch for the same.

At present Impact Integrated Infosystems (P) Ltd is one of the pioneering firms among the software development houses in Kerala. Impact Integrated Infosystems (P) Ltd is well supported by various consultants at different segments of the industry.

Our experience in providing software solutions to organisation with rapid systems analysis and controlling the coding with the support of library routines developed in-house paved the way for Impact's success in the industry.



About Elixir–Hospital

Elixir–Hospital, an integrated software solution, designed and developed by high end professionals, aims to achieve further qualitative improvement in the performance of your hospital. Elixir–Hospital caters to all information management needs of you hospital based on the best industry practices. It ensures that you can sit back and manage the show, providing all information at your finger tips. Elixir–Hospital has over 200 reports including specialized MIS reports, developed in nearly one and a half decades of rich experience in assessing the needs of our varied hospital-clients. In fact, when you opt for Elixir Hospital you choose to benefit from our experience enriched by years of innovations.

Product features at a glance

- Most secure and data access restrictions.
 - Cash counter – ensure fidelity /avoid cash loss (a perfectly managed cash counter)
 - Multi-type cancellation with hierarchy.
 - Audit trails
 - Ensure restrictions on transactions changed/deleted
 - Ensure proper documentation of transactions
 - Enhanced Credit Control Management
 - Best in the industry accounts implementation
 - All credits/discounts are accountable
 - MIS through Automated Email
 - Department wise performance
 - Extensive accounts related MIS
 - Lab consumption control
 - Methods to control stock loss in pharmacy.
 - Software driven methodology to control purchase orders/requisitions.
 - Seamless stock correction during implementation
 - MIS for proper purchases decisions
 - Drill Down
 - Multilevel security - at its
 - Tight Menu Security
 - Added feature – counter logins
 - Automatic Data Backup
 - Easy to use Enquiry System with added features
 - Parameterised
 - State of art technology
- and more...



Outpatient Department



Our powerful unique solution for the uniform problem area of Outpatient department in the hospital takes care of Registration, Revisit, appointments and all other bill related transactions. Our Implementation Standard provide a platform for the implementation of best hospital practice management necessary to create process and practice standards that will enable the evaluation of service performance for further improvement and betterment of OPD. OPD is the mirror of the hospital, which reflects the functioning of the hospital being the first point of contact between the patient and the hospital staff. Our main functionalities in OP are:-

- New Registration/ Revisit/ follow-up
- Doctor Definitions • Debtors Company
- Company Employees • Barcoding
- Consultation Booking • Service Bills
- Receipts & Payments • Patient wise bills
- Credits and Care-off • Chart Transfers
- Service Packages • Package Rates
- Chart Report • Appointment Schedule



Inpatient Department

Our efficient Inpatient Management Modules handles the Admission, Discharge and Transfer Functions, Ward management Functions. We understand the complexity of managing an inpatient unit. It's a 24-hour, seven-day-a-week commitment that requires accurate documentation and efficient organization.

This module takes care of the details of patients who are admitted in the hospital. This module automates the day-to-day administrative activities and provides instant access to other modules, which leads to a better patient care. The functionalities of this module are:-

- Inpatient Registration/ Discharge
- Insurance Definition
- Advance /Discharge Bills/service bills and Part billing
- Bed Allocation/occupancy and Room Transfers/ Room Status
- Bills from External Sources
- Pending Advance Requests/ Discharge Requests /Discharge Summary
- Procedures • Payment Due from Patients
- Pro-forma Bill • IP Charges
- Room Rent Calculations and Room Cleaning/status definitions
- Division / Doctor Wise Reports/ Counter Wise Reports
- IP List • Occupancy Matrix



Doctor Master - Page 1 of 22 (110)

Doctor

Personal Details

Short Code : SP

Name : SANDEEP

Department : GENERAL MEDICINE

Qualification : MD(General. Medicine),MBBS

House Name : 201

Building : Erattu

Street : Kichry

Country : India

State : kerala

District : Eranakulam

PIN Code : 632985

Phone No. : 0484-2835710

Mobile No. : 99635148748

Email : sandeep@gmail.com

Website : http://sandeep.com

Automatic : ☐ SMS ☒ Email

Registration Details

On Roll : ☒

Holiday Reg. : ☒

Special Reg. : ☒

Visiting : ☐

Independent Fees

Reg. Fee : ☒

Conslt. Fee : ☒

Fees

Cross Cons Fee : 10.00

Booking Fee : 50.00

Tel. Booking Charges : 20.00

Validity

Free Visit After Discharge : 2 (days)

Department wise Charge : ☐

Max. Visits : 5

Settings

☒ TOKEN Settings

☒ COMPANY Wise Fees

Official Details

Dr. Account : 0003 | SALARY AND UPKEEPING ADVANCE

Designation : General Physician

Location : SATELLITE OP PHARMACY

Consult Room : General Room

Footer : Dr. SANDEEP (General Physician)

Fees Settings

Day	Time(24 Hr)		New Registration				Revisit				Validity (Days)
	From	To	Ordinary	Cons	Reg	Cons	Ordinary	Cons	Reg	Cons	
Sunday	10.00	20.00	110.00	20.00	30.00	40.00	50.00	60.00	70.00	80.00	1
Monday	10.00	20.00	10.00	20.00	30.00	40.00	50.00	60.00	70.00	80.00	2
Tuesday	10.00	20.00	80.00	70.00	60.00	50.00	40.00	30.00	20.00	10.00	2
Thursday	10.00	20.00	80.00	70.00	60.00	50.00	40.00	30.00	20.00	10.00	2
Friday	8.00	20.00	80.00	70.00	60.00	50.00	40.00	30.00	20.00	10.00	2
Saturday	10.00	20.00	80.00	70.00	60.00	50.00	40.00	30.00	20.00	10.00	2



Doctor's Desk



This module offers highly secure web access. This will enable a doctor to view the patient details through any device with an internet connection.

- Appointments • Doctors Notes
- Scanned Medical Records • Immunization
- Study Group • Result Viewer with graphs • Allergies
- Previous medications • IP Request
- Services • Scanned Documents
- Patient Reference • Prescription
- Discharge summary • History
- Surgery Posting • Dash board
- ICD 10 integration • Take note integration
- Dicom integration • Vital Signs
- Nurses Notes • Next follow up
- Certificates Generation • Certificate template
- Patient Medical history
- SMS integration and many more features



Blood Bank

This module maintains information regarding blood donations and various other details like donor screening, requisition, transfers, inventory etc.

- Blood donation
- Donor Screening
- Expiry reminders
- Requisitions
- Inter departmental transfers
- External issues
- SMS integration
- Auto emailers
- Integration with billing module
- Integration EMR
- Inventory details
- Donor details
- Auto Pop-up reminders



Radiology



Module covers booking of appointment, requests from doctors till the integration of DICOM viewer. The interface is user friendly with a dashboard like view of the status of radiology requests and related status. The inbuilt dicom viewer enables the doctor to view the dicom files from anywhere through an intranet or internet connection. Elixir Hospital can be also be integrated to any third party PACS.

- User defined result templates
- Easy user interface
- Integration with Doctor's Request
- Integration with Billing module
- Dicom viewer integration
- Test Status

MIS



- Stock Abstract - Content wise
- Stock Abstract - Category wise
- Medicine Profitability
- Stock Abstract - Manufacture wise
- Stock Abstract - Supplier wise
- Margin Variance Analysis
- Sales Abstract
- User-wise collection
- Automated daily statistics
- Location wise Stock – drill down
- Stock aging
- Finance MIS
- Services summary
- Services credit summary
- Inpatients without rooms
- Income breakups
- IP advance Status
- Doctor income contribution
- Company wise credit details

- Quotation approvals
- Re-order level
- Unfulfilled prescription
- Credit/care-off reports
- Zero stock items
- Non moving items
- Sales Profit - Item wise
- Sales Performance
- Sales Return
- ABC Analysis
- Stock valuation
- Expiry medicine reminders
- Stock valuation (FIFO)
- Pharmacy Profitability
- Doctor statistics
- Lab consumption
- Patient wise services details
- Department wise Income
- Daily Income graph
- Doctor wise Income
- Doctor wise OP/IP Details
- New / Revisit comparison graph
- Doctor wise OP graph
- Month wise Occupancy graph
- Bed Occupancy Details
- Session wise Doctor Statistics
- Daily Cash and bank balances
- Free/Charity given
- Collection breakup (instrument wise)

Daily Automated Flash Report through email



IP EMR

- Our latest release of IP EMR gives you a more flexible, insightful and integrated platform that can be operated on multi devices, such as a COW (Computer on wheels) or on tablet.
- Elixir's IP EMR helps to improve your entire practice workflow, giving you and your patients a better experience.
- Progress notes can be voice detected, orders can also be processed online.
- A comprehensive dashboard which enables doctors to view all patient related information in a single screen using multi select option.
- Better organized - Notes, prescriptions, orders with results, TPR charts, medication records, scans and images etc.
- Truly customizable and user friendly interface.



Interactive Patient Portal

Interactive Patient Portal - mobile friendly

Portal which is seamlessly integrated with the hospital database including the financial accounts. The portal is being continuously updated with new features.

Features which are present now are :

- Booking
- Discharge Bills payments
- Investigation and procedure bills payments
- Pharmacy Bills payments
- Advance deposits
- Lab result viewers

We also have patient interface which shows the live queue status of the patient.



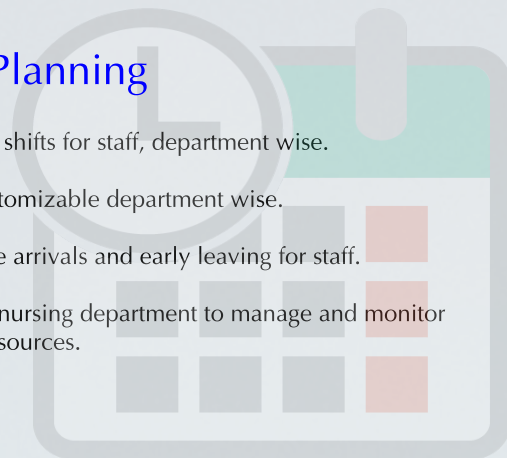
Duty Planning

Options to allocate shifts for staff, department wise.

Shift timing are customizable department wise.

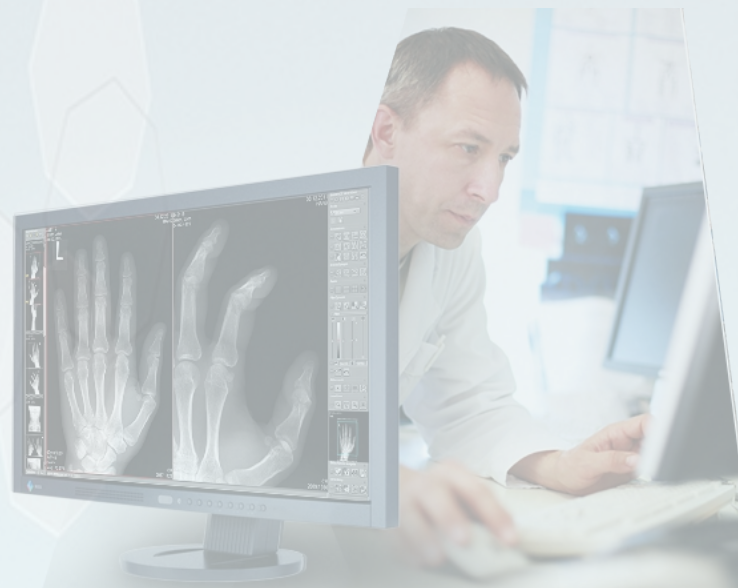
Help is tracking late arrivals and early leaving for staff.

This also helps the nursing department to manage and monitor their man power resources.



PACS Integration

Doctors will have a PACS interface from Elixir's EMR, as and when the reports are ready.





Pharmacy



Our Pharmacy management systems works unfliningly, flawlessly and seamlessly in complex multi-store to automate the computing processes along with streamlining the workflow and thereby enhancing the customer base more attractive in competing a world of growing challenges of retail pharmacy field. This module implements host of features and generates reports to maintain optimum stock, reduces pilferage and maintain & monitor the profitability of the pharmacy.

- Multi Pharmacy • Sales • Sales Return
- Stock Transfers • Automated Requisition Replenishments
- Stock Conversions
- Stock Adjustments with adequate security
- Stock Verifications • Physical Stock
- Night audit systems
- Medicine Expiry Reminders • GP Ratio
- Margin Variance • ABC analysis
- Sales Profitability • Stock Valuation
- Department wise Reports • Doctor Wise Reports
- Sales tax e-filing
- And more



Medical stores

The revolutionary Medical Store Management system takes care of managing and automating Medical Stores. It resolves all the problems faced in the in the field of Medical Store Management. Our sharp shooting R&D promotes the better quality, accuracy and reduces the work load of store keeper and increases the efficiency in medical stores management. This Flexible and adaptive software is fully loaded with advanced features to meet all the requirements of a medical store.

- Automated purchase orders
- Stock adjustments with adequate security
- Stock transfers to sub-stores, pharmacies and other locations.
- Purchase and purchase return • Goods received note
- Requisition Management • Automated Reorder level
- Purchase claim • Quantity Conversions
- Sub Store Management • Vendor management
- Outstanding management • Expiry item list
- Return statement • Night audit systems
- Medicine Expiry Reminders • GP Ratio
- Margin Variance • ABC analysis • Profitability
- Stock Valuation • Various management information reports
- Many more ..





Laboratory

In the field of hospital lab management we have been the Pioneers managing the comprehensive solution for laboratories of leading multi-specialty hospitals and independent laboratories. Data accuracy is maintained through direct equipment interfaces. The few functionalities of this module are:-

- Lab Definitions
- Investigations
- Services
- Specimen
- Forward Specimen
- Results
- Results(Outside)
- Lab Investigations-Date wise
- Lab Investigations-Doctor wise
- Outside Tests Register-Lab wise
- Pending Results
- Pending Results(Outside)
- Result Reviewer



Financial Accounts



Our sophisticated and fully integrated and online financial accounts are designed in such a way to avoid multitude of accounting issues complicating the hospitals. The software has adopted the industry accepted accounting standards for account the hospital related transactions to the financial accounts module. The accounting standards implemented by us are widely accepted by our clients. The hospital has full flexibility to define the account heads as per the policies of the hospital.

- Chart of accounts • Definable Voucher types and transaction type
- Cash/Bank vouchers • Journals, Credit/Debit Notes
- Closing Stock • Bank Reconciliation
- Automated cheque numbering
- Cheque Printing • Ledger Reports • Ledger
- Ledger-Datewise Summary • Consolidated Ledger
- Daybook • Ledger-Type wise • Locate Amount
- Debtors Analysis • Debtors Outstanding
- Debtors Ageing-Consolidated • Creditors Analysis
- Creditors Ageing • Creditors Outstanding • Bank Reconciliation
- Account Balance • Schedule wise Consolidated
- Cash Flow Statement • Receipts and Payments
- Summarized Cash/Bank Balances
- Bank OD Interest Calculation • Trial Balance and Balance Sheet
- Trading and P and L Account



General Inventory



Our general stores module is designed to be closely integrated with our hospital management system. The General stores module handles transactions related to all non – medical inventory in a hospital. The general stores module allows the user to manage and update the various general store items. The module helps in tracking the inward / outward goods, stock level, cost of inventory and fast moving and non fast moving items etc., for planning avoiding unnecessary stocking. This also deals with Purchase of Items, Issue of Items, Reorder level Setting, Online request for stock from various sub-stores, Online stock transfer, maintenance of stock at different sub-stores, Physical stock verification and adjustment, Return of items to supplier etc. The few functionalities of this module are:-

- Item Master • Physical Stock
- Purchase Order • Transactions
- Purchase Report and Purchase Orders
- Purchase Report-with Items
- Purchase Orders-with Items
- GRN Register and GRN Voucher
- Transactions
- Stock Reports

- Stock Register Detailed
- Stock Consolidated
- Item wise Stock Register-Summary
- Physical Stock Verification
- Variation in Actual Stock
- Purchase Consolidated-Detailed
- Supplier wise Purchases
- Category-Item wise Reports
- Re-Order Level
- Supplier wise item details
- Item wise Supplier details
- Item wise stock details



Medical Records



This module offer management of physical medical records and seamless integration with front office. This module also plays an vital role in evading financial loses also. Tracking of charts becomes easier.



Payroll



Our payroll management software is one hundred percent integrated with the hospital management software and financial accounts. The software meets all statutory requirements. A seamless integration with the hospital management systems ensures proper tracking of staff credits and related recoveries. The few functionalities of this module are:-

- Employee info • Earnings and Deductions
- Leaves, Leaves Entitled and Leaves Remaining
- Shift and Shift Pattern
- Category details and Department details entry
- Pay Scale, Attendance and Overtime
- Biometrics Integration
- Earnings and Deductions Master
- Data Transfer to Banks
- Data Transfer to PF
- Elaborate Pay slip
- Late coming early leaving report
- Flexible Salary Certificate

- Auto Bank Letter Generation
- Shift Allocation
- Monthwise Earnings, Summary, Deductions (Loans)
- Earnings and Deductions Summary
- Remaining Leaves List • Overtime Register
- All PF / ESI statutory reports • E-filing
- Service Record • Increments List • Loans and advances



Nursing Station



The nursing station module caters to most of the requirements of the nursing functions which also include ordering investigation, drugs, procedures and capturing vital signs. Advance remittance requests, discharge requests, room cleaning requests, room allotment is also handled by this module.

Apart from the above clinical records which needs to be maintained is also captured.



Queue management



Effective queue management system is designed for front office and for patients waiting in front of doctor's cabin. Token dispenser is integrated to the hospital management software.

DOCTOR NAME	ROOM NO	NOW SERVING	TOKEN
DR. AJAY KUMAR	1	G1	G2
DR. ARCHANA.P	2	G5	G6
DR. KAMALADEVI	3	V1	G9
DR. SANGAMESWAR	4	G30	G31
DR. NARAYANAN	5	G9	G10
DR. ANOY	6	G3	G4



Laboratory equipment integration

We do have pre-defined application program interfaces to integration most of the laboratory analyzers, this reduces error in result entry and enhance the accuracy of results. Any new machines can also be integrated using the protocol details provided by the manufacturer.



Whats app / SMS Integration & Automated emails

Seamless integration with sms gateway and email client to intimate vital information to patients/by-standers, doctors, hospital management etc.



Maintenance

All types of minor and major losses occurs due to the poorly maintained assets, which can lead to breakdowns and stoppages that affects time and reputation. Obviously greater the impact in terms of quality issues spoilage the morale and the extra strain on maintenance of equipments. All these types of losses can be minimized by our module. This module provides the facility to keep the inventory of all the equipments/instruments which require regular check-up or maintenance. In this module Annual Maintenance Contract (AMC) records can be maintained along with the service and work orders. This also keeps the history of all previous services done on equipment. Routine maintenance checks and procedures increasing the responsibilities of operatives, so that they are responsible for their workspace and assets.



Insurance Desk

Module handles insurance patient's billing, approval process, claims settlement, outstanding monitoring.

“We ensure that our customers are happy, because we firmly believe that it is the customers who have kept us going. All requests from the customer are taken in the right spirit and we ensure that the solutions they seek are provided to them on time every time.”

250 - 750 Bedded Hospital	12
80 - 250 Bedded Hospital	31
< 80 Bedded hospital	05
Polyclinics	14
Diagnostic Centers	50
Total Healthcare Installations	112



Impact Integrated Infosystems (P) Limited

2nd Floor, Kalapurakkal Tower, Nethaji Road, Kadavanthra, Cochin - 682 020

Kerala, India. Phone : +91-484-4000097, 2317798

Email : info@impactin.com, Website : www.impactin.com/hospital-management-system.htm

Impact Integrated Infosystems, 575, Horseman Drive, Oviedo, FL 32765, **USA**, Email : jerry.kampiyil@impactin.com, Phone : +1 443 962 4271

©2014 Impact Integrated Infosystems (P) Ltd, All rights reserved. No part of this publication may be reproduced or transmitted in any form or for any purpose without the prior permission of Impact. The information contained herein may be changed without prior notice. This publication is for information purpose only, without representation or warranty of any kind. Only warranty of Elixir-Hospital are those that are set forth in the warranty statement accompanying the product and services. This document contains the snapshot of the application and does not contain the full features available in the application.